



DC Prague-Zbraslav

Your beacon of innovation and sustainability for entering Central Europe





DC Prague-Zbraslav

Largest data centre in the Czech Republic

Over 2,000 racks

Total data room area exceeds 4,500m²

26 MW power supply

Located in the outskirts of Prague



We offer



Sustainability



Efficiency



Reliability



Security



Innovation

Leading with green innovation

Sustainability

100% renewable energy

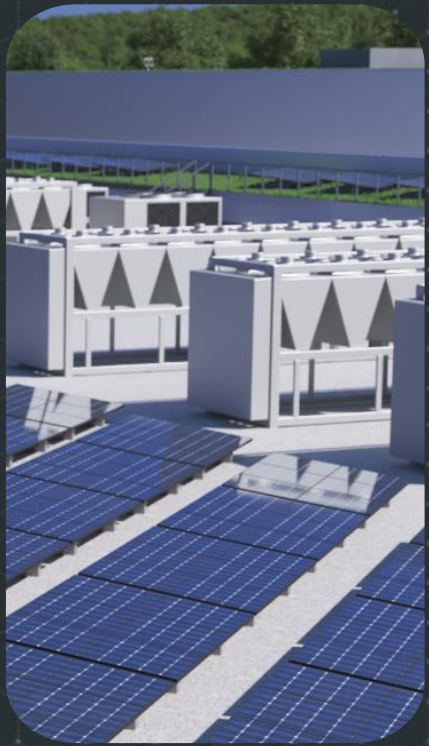
- Local solar energy as additional power supply (including electromobility)
- Pre-purchased energy for up to 3 years to ensure cost stability.

Innovative cooling solutions

- GWP < 10

LEED registered

Commissioning ASHRAE standard



Efficiency

Exceptional efficiency

- Average PUE of 1.25

Optimised power capacity

- 1 MW IT power per data room (2,6kW/m²)

Strategic location

- Outskirts of Prague
- Easy access with public transport

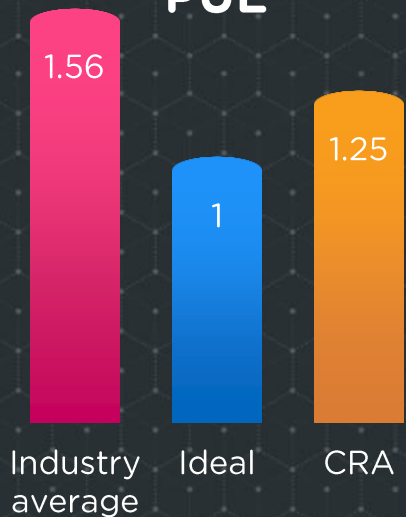
Advanced cooling system

- Slab floors
- Hot aisle containment
- Cooling walls
- Tailor-made cooling solutions for high-density racks

Innovative energy reuse

- Usage of residual heat of the data centre

PUE



- ❧ **State-of-the-art nationwide infrastructure**
- ❧ **Unmatched reliability**
- ❧ **Stringent SLA compliance**
- ❧ **TIA 942 rated facilities**
 - ❧ Valid zoning permission
- ❧ **Strategic project timeline**
 - ❧ Valid zoning permit
- ❧ **Memorandum of Understanding**
 - ❧ Signed by the Ministry of Industry and Trade (MIT)

Reliability



“A modern data infrastructure is essential for promoting innovations and business development in the digital era. That’s why we support the plan to build a technology hub that has the ambition to become the largest data centre in Central and Eastern Europe.”

- Minister of Industry and Trade

Security

Enhanced physical security

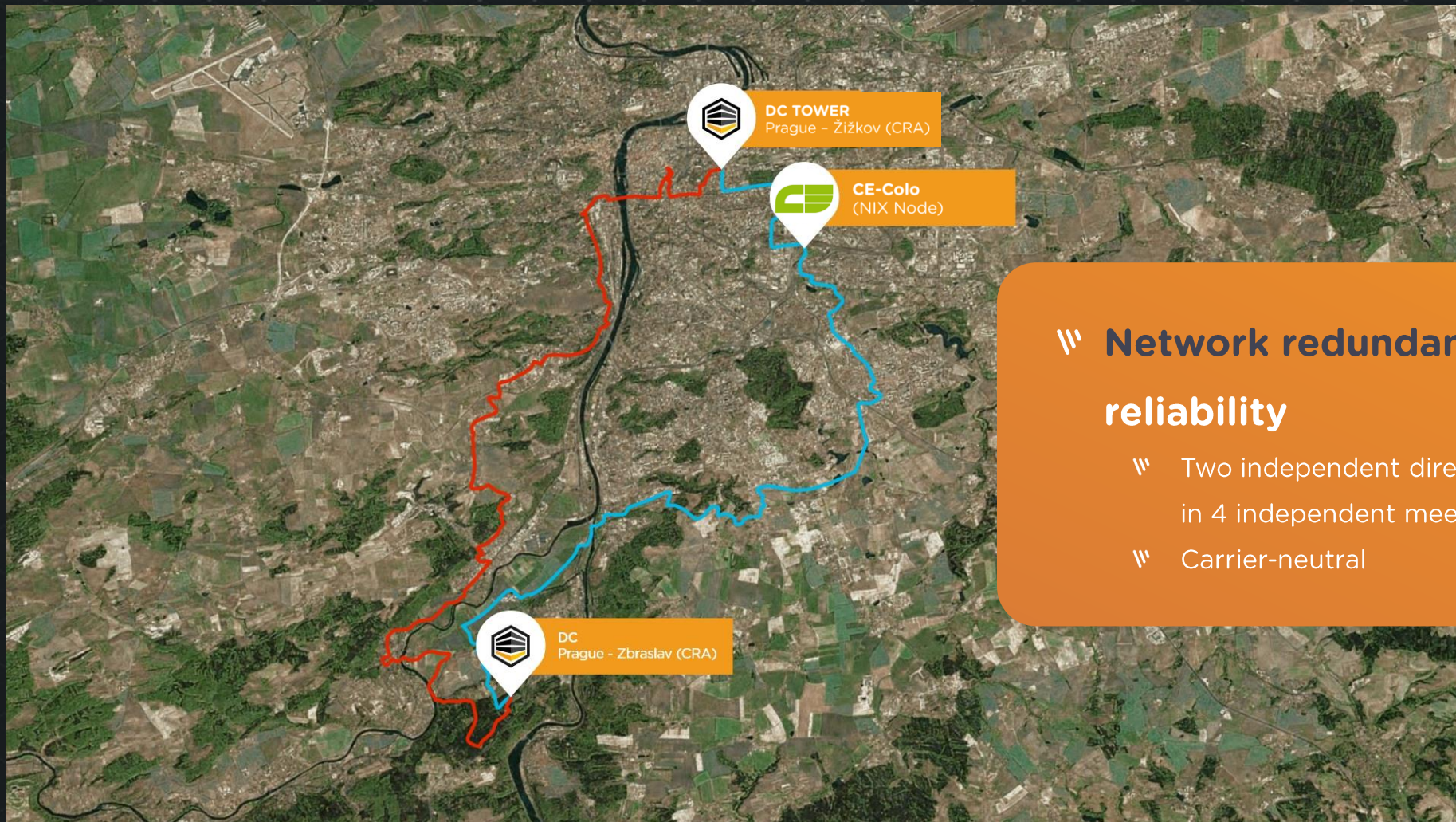
- Highest local and international standards

Advanced power supply redundancy

- 22 MW via two independent routes + 4 MW from another provider
- Negotiating future power upgrade

Network redundancy and reliability

- Two independent directions terminating in 4 independent meet-me-rooms
- Carrier-neutral



Network redundancy and reliability

- Two independent directions terminating in 4 independent meet-me-rooms
- Carrier-neutral



Innovation

Unmatched modularity

- Flexible data rooms with the ability to divide them into smaller parts (with walls/cages)
- Private data rooms available

Customer-driven design

- Advanced, tailor-made cooling solutions for high-density racks
- High cooling versatility (average of 6 kW/rack)
- Power load up to 20kW without additional cooling strengthening
- Dedicated data rooms available upon client request

Integrated workspaces

- Each data room has a dedicated office and storage space



CRA
ČESKÁ RADIO MOBILITA

**Take your chance
Enter Central Europe now**